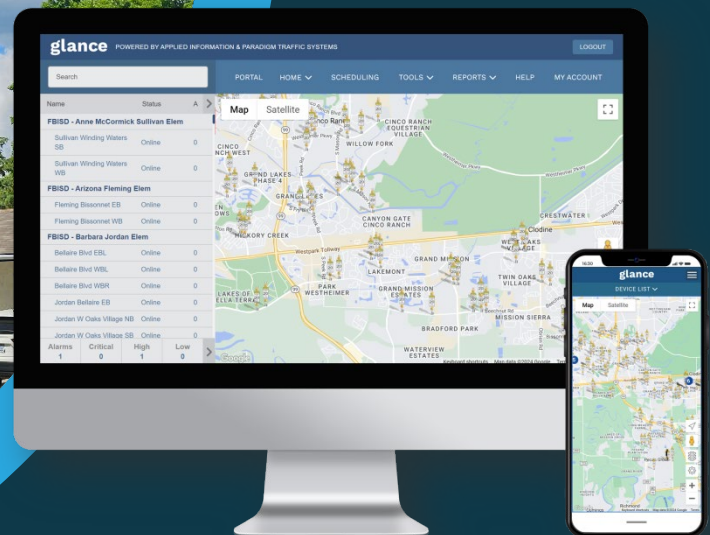




APPLIED[®]
INFORMATION



AI-500-070-CV School Beacon Timer Switch with C-V2X Communication

OVERVIEW

The AI-500-070-CV is the first ever solar-powered school beacon timer switch with built-in Cellular Vehicle to Everything (C-V2X) communication. This small form factor device equips School Beacon Flashers with C-V2X communications over 5.9GHz direct radio and 4G LTE cellular network. The unit can be easily retrofitted into existing school beacon cabinets, making it cost-effective to upgrade beacons with the latest technology, featuring low power requirements and a robust design.

The unit Works with Glance[®], providing a cloud-based school beacon solution. With C-V2X enabled, active school zone alerts can be sent through the Waze and HAAS Alerts applications, giving motorists advanced in-vehicle notifications. The unit also adds remote monitoring and control to school beacon equipment, allowing remote schedule configurations from Glance.

Glance provides 24/7 monitoring of school beacon status and health. Equipped with a self-calibrating knockdown detection device, the AI-500-070-CV can detect when a pole has been knocked down. Additionally, as soon as a problem is detected in the field, email and text alerts are sent to notify the necessary personnel of the exact fault.

FEATURES & BENEFITS

- ✓ Dual C-V2X communications
 - ✓ C-V2X Direct 5.9 GHz (PC5)
 - ✓ C-V2X Network (Uu)
- ✓ Solar powered
- ✓ Works with Glance
- ✓ Low power consumption
- ✓ Local manual override switch
- ✓ Monitor beacon lamps current
- ✓ GPS enabled for self-locating
- ✓ Built-in knockdown detection sensor
- ✓ Low-cost Internet connectivity solution
- ✓ Remotely change schedules to multiple devices



HARDWARE SPECIFICATION

AI-500-070-CV	
Connectivity	
Cell Modem	Yes
RS-232 Port	Yes
Ethernet Port (10/100 Base-T)	Yes
GPS	Yes
C-V2X	Yes
Knockdown Sensor	Yes
Industrial I/O	
Digital Outputs	2 X 16 A Beacon Control Circuits
Digital Inputs	Door Status
Analog Inputs	AC Voltage, Solar Battery Voltage, Solar Panel Voltage & Temperature
Miscellaneous	
Operating Systems	FreeRTOS Systems
In Service Light	Yes
Operating Temperature	-37°C to 74°C
Humidity	5-95% non-condensing
Dimensions	8" x 5" x 2"
Input Voltage	10-30 VDC, 120 VAC
Power Consumption DC	Idle - 3 W, Active - 3.5 W
Battery Backed Memory	Yes
Also suitable for...	
Solar/battery powered	Yes
Lamp Monitoring	Yes
Scheduling	Yes
Voltage Status (VDC or VAC)	Yes
Knockdown Detection	Yes