

## AI-500-022

### For Individual Street Light Monitoring

#### Overview

At Applied Information, we understand the importance of dependable street lighting. Applied Information's Street Lamp Monitoring system connects to your street light infrastructure, and offers the ultimate solution for managing individual street lamps with easy, real-time, remote monitoring, and control capabilities. The system further offers traffic departments advanced scheduling, monitoring of health statistics, and dynamic alerts assist in reducing maintenance costs, improving visibility in urban areas, and providing supplementary public safety benefits.



The AI-500-022 device is equipped with a cellular modem with connection over the 4G network, GPS for automatic self-locating, and an accelerometer for tilt and knockdown detection sensing. Integration and connectivity to the cloud-based Glance platform allows for: 24/7 management, power monitoring, remote programming, astrological clock scheduling capability, advanced data collection, and automatically generated reports detailing key performance indicators. Alerts are provided via text and email when problems are detected in the field, ensuring real-time notification of power failures (as a result of integrated last-gasp battery backup), light ON/OFF errors, knockdown events, and more. The device also continues to log events locally if the cellular network connection is down or lost.

The AI-500-022 is compliant with NEMA standards for Roadway Area Lighting Equipment and ANSI C136.41 standards, the enclosure is IP66 rated, ensuring full durability in all weather conditions. The AI-500-022 is a fixture-agnostic device, making it compatible with any 0-10 V dimming fixture with an ANSI C136.41-compliant receptacle.

#### Features & Benefits

- ✓ Future-proof with "over-the-air" updates
- ✓ Cost-effective remote monitoring solution
- ✓ Easy to install and configure
- ✓ Quick and easy access
- ✓ Compatible with Glance
- ✓ Automatically generated reports
- ✓ Failure alerts sent via text or email
- ✓ Programming capability (dusk-to-dawn, dimming)
- ✓ Astrological clock scheduling
- ✓ Built-in knockdown detection sensor
- ✓ Power monitoring
- ✓ Light ON/OFF errors
- ✓ Improved visibility and safety benefits
- ✓ Local photocell override available

Call us today to get started at [678.830.2170](tel:678.830.2170) or email us at [sales@appinfoinc.com](mailto:sales@appinfoinc.com)

# Hardware Specification



AI-500-022 SLM

## Connectivity

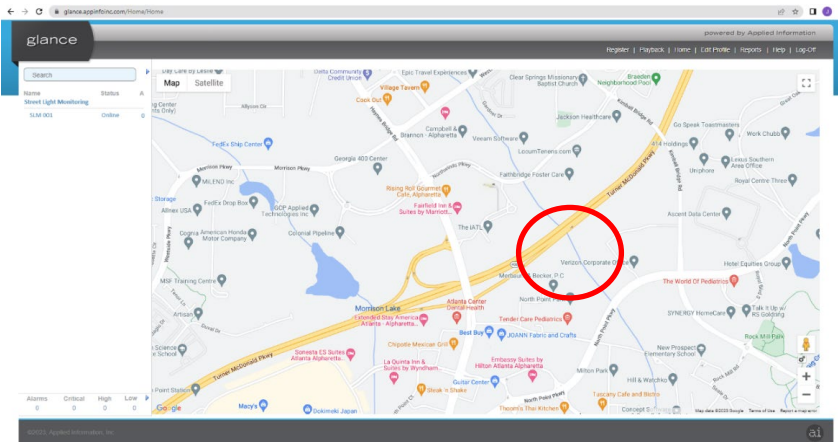
Cell Modem Cat M1	Yes
OTA Software Update	Yes
Knockdown Sensor	Yes

## Industrial I/O

Analog Inputs	AC Voltage, Lamp Current, Light Sensor, Temperature
---------------	---

## Miscellaneous

GPS	Yes (Accurate to 3m)
Enclosure IP Rating	IP66
Operating Temperature	-40°C to 85°C (-40°F to 176°F)
Humidity	5-95% non-condensing
Dimensions	9.8 cm x 8.2 cm x 8.2 cm (H x L x W)
Input Voltage	90-300 VAC
Non-volatile Memory	Yes
Last Gasp Battery Backup	Yes



Glance Monitoring System



AI-500-022

**Join the smart lighting revolution by making streetlight management simple and easy with Applied Information.**